

Arsenii Milenchuk, Denys Bondarchuk, Ruslan Pylypiv, Maksym Kuznietsov, Mykyta Kondratiuk

Telekom mentor: Martin Dzbor

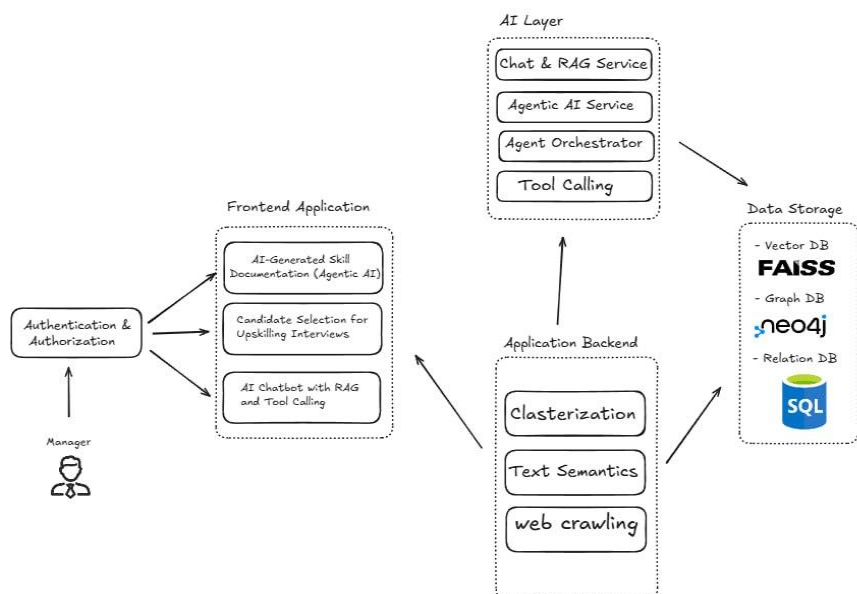
University mentor: prof. Ing. Iveta Zolotova CSc.

Problem Statement

Large companies have problems with the rapid implementation of new technologies due to a lack of current competencies and delays in team building.

Solution Overview

We have created an AI system that helps companies implement new technologies faster. Simply specify the target technology – the system will automatically determine the necessary skills and select candidates who are already prepared to work with this technology or can learn it quickly.

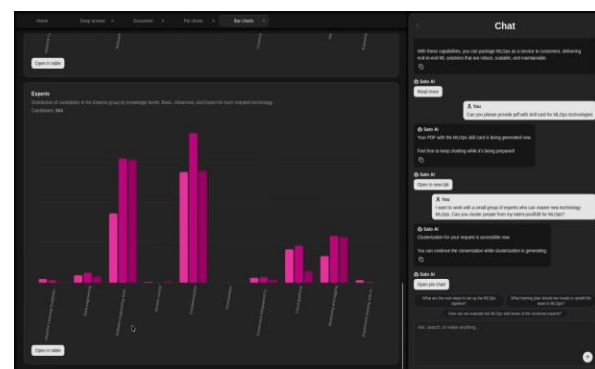
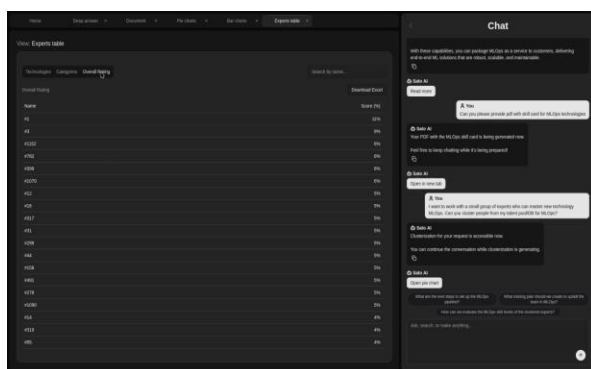
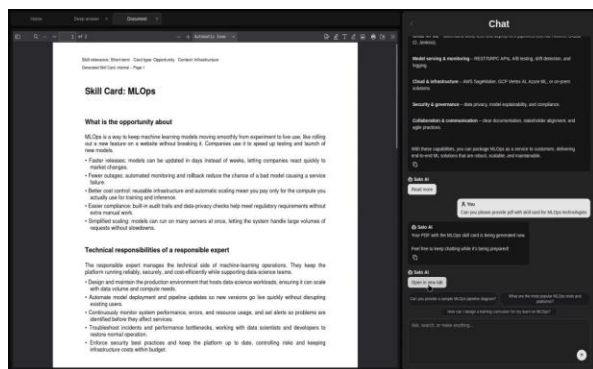


Key Features

- Reduces the time needed to select specialists
- Reduces the workload of managers
- Reduces the risk of selecting the wrong employees
- Accelerates companies' entry into new technological areas

User Interaction

The system provides an interactive interface in which the user communicates with the platform via chat and a visual environment (graphs, diagrams, maps).



In addition to basic functions, you can generate a technology map, set up filters, and work with analysis results.

System Evaluation

The system was tested on a dataset consisting of **100,000 records (3,500 employee profiles)**. On average, the system generated a list of the **15 most suitable candidates** for a given technology in **5 minutes**.