

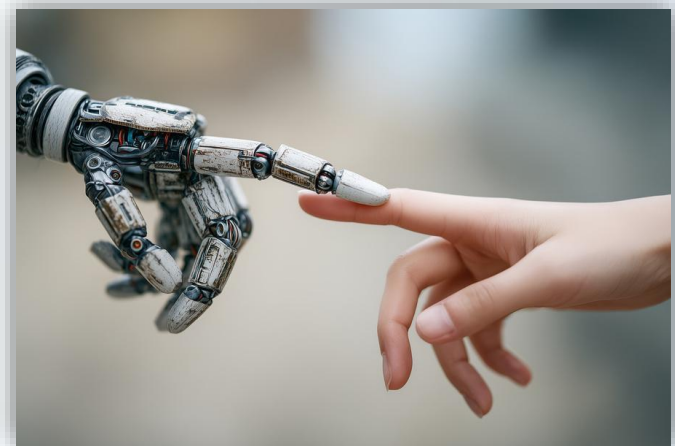
Students: Raimondas Paulauskas, Tadas Pleškys,
Domantas Stankus, Donatas Norkus, Vilius Būga.
Company mentor: JUNG Vilnius, Raimundas Skurdenis.
University mentors: Daiva Stanelytė, Birute Rataitė.



Smart Homes: A Necessity That Is Difficult to Choose

The building sector is one of the largest energy users in the European Union. Smart Home Management Systems (SHMS) support nearly Zero Energy Buildings (nZEB) and renewable energy integration, yet adoption remains slow. Users often lack trust and understanding of energy flows and system compatibility, making smart home decisions difficult and delaying energy-efficient innovation.

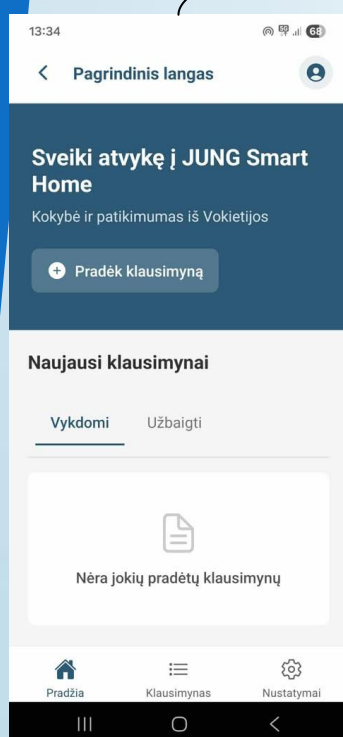
- Personalized SHMS recommendations
- Plain-language user interaction
- Compatibility-based evaluation
- Ranked system suggestions
- Focus on comfort, security, and integration



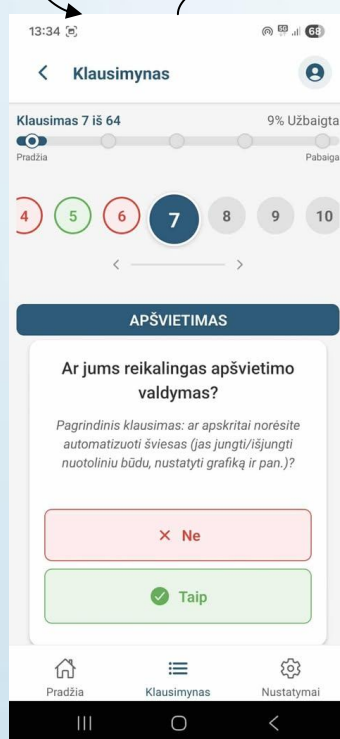
The Solution: Your Personal Pocket Consultant

We provide a mobile application with a web-based control panel that delivers personalized Smart Home Management System (SHMS) proposals based on user needs and constraints.

The system turns complex technical choices into a guided process: users complete a structured questionnaire, the engine checks system compatibility, and the tool produces a ranked recommendation



Home tittle screen



Question's page



Recommended system for your home



Methodology and User Journey

A simple, step-by-step questionnaire covers 7 distinct technical categories using plain-language questions, allowing users to express requirements without engineering knowledge. The journey progresses from basic living needs to specific expectations, producing accurate recommendations while minimizing complexity and decision fatigue.