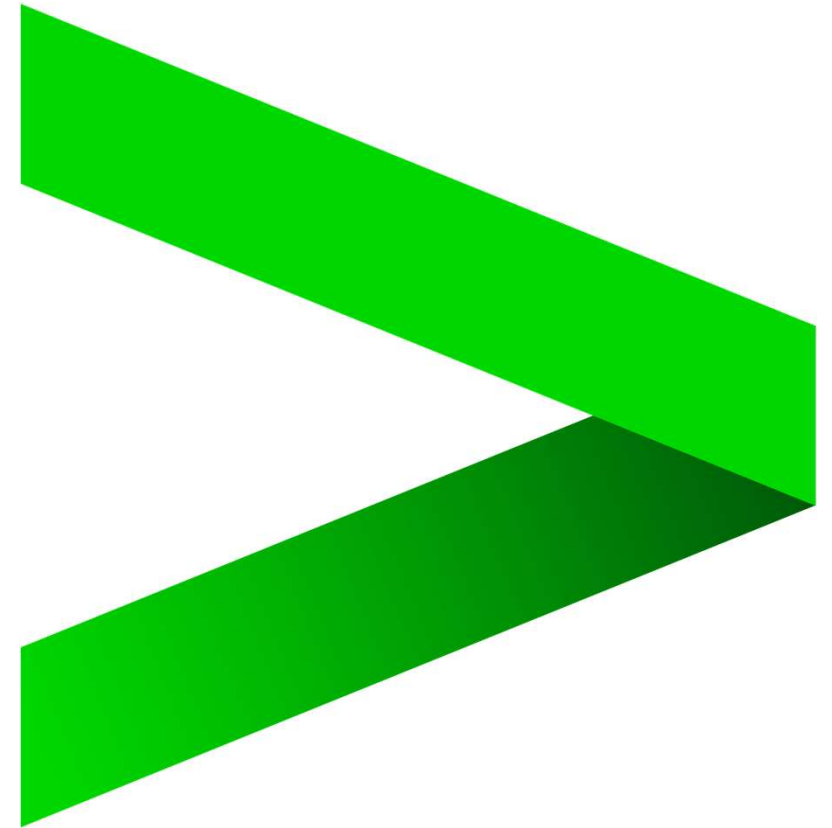


**MODERN  
ENGINEERING**  
FOCUSED ON  
**DEVOPS, AGILE  
AND AUTOMATION**



**accent<sup>></sup>uretechnology**

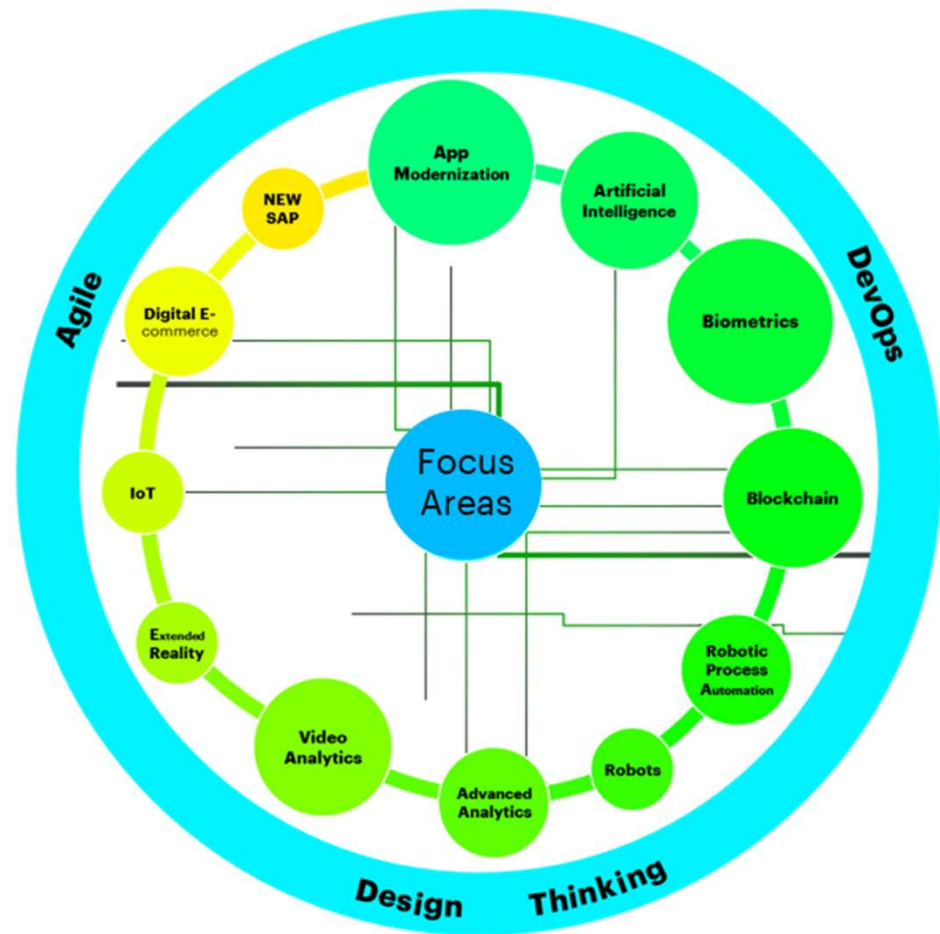
# ABOUT ME

- *„I am passionate about making a difference to the services and products used in everyday life. Working in Accenture for the last ten years has provided opportunities that have shaped my future career choices. As the DevOps Lead for the central European Danubia region (Slovakia/Romania/Hungary) I am consistently trying to deliver a faster time to value for our clients.”*
- james.k.eardley@accenture.com

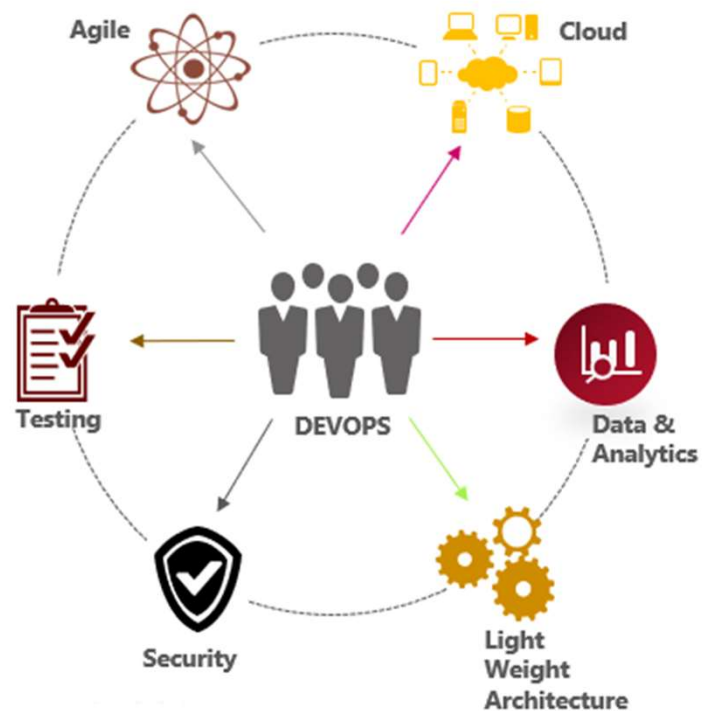
**accenture**>technology



# DEVOPS IS A KEY ENABLER OF NEW IT

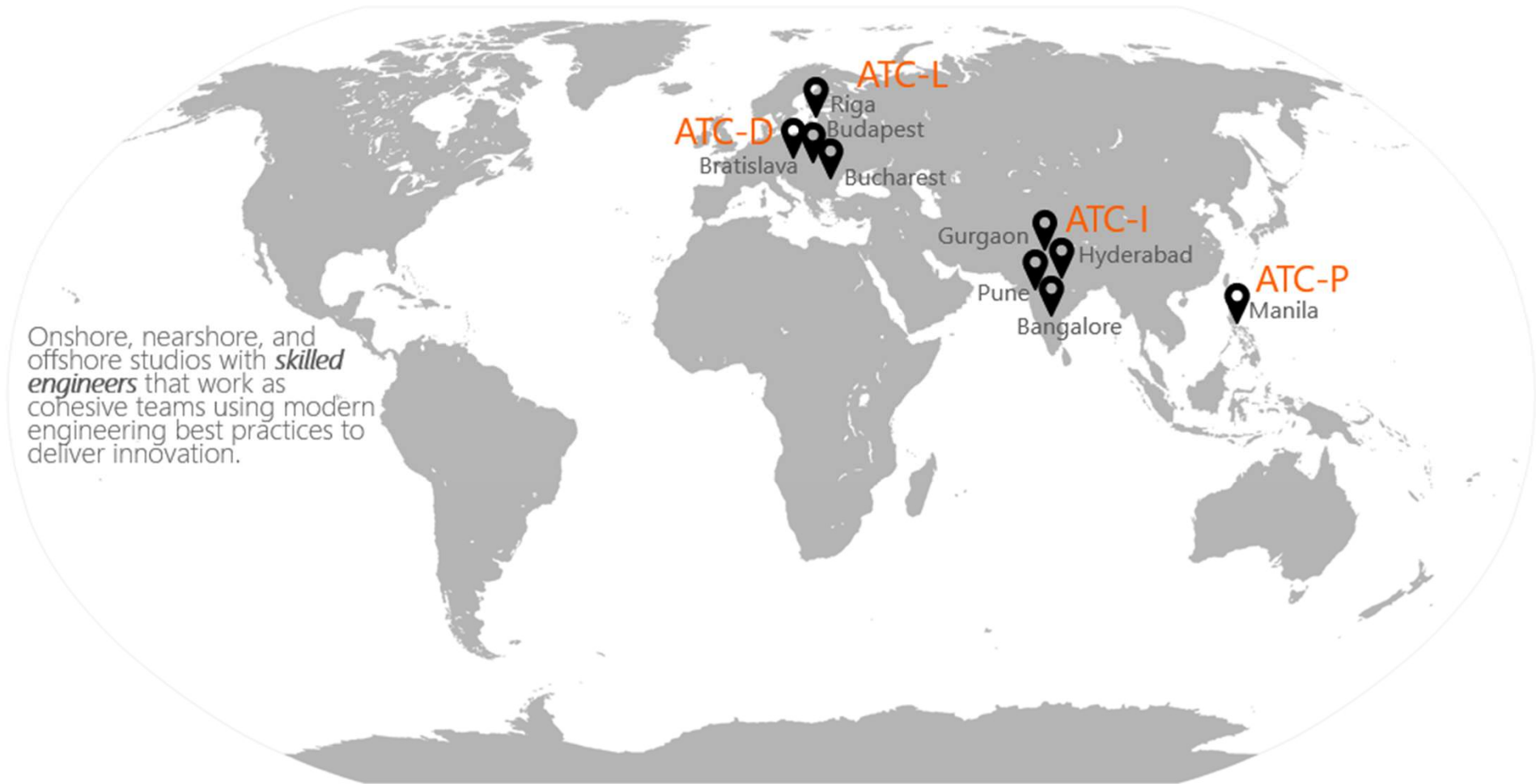


DevOps is central to the enabling New IT. It provides the both technical and process level levers to organizations to move to the “New”.



<b>Agile</b>	Iterative and incremental development
<b>Cloud</b>	Workload management on demand
<b>Data &amp; Analytics</b>	KPI dashboard for E2E insights into the SDLC
<b>Lightweight architecture</b>	Quick set up and efficient operations
<b>Security</b>	Greater resilience and fewer threats
<b>Testing</b>	Automated test techniques

# OUR TEAM



Onshore, nearshore, and offshore studios with *skilled engineers* that work as cohesive teams using modern engineering best practices to deliver innovation.

# INCLUSION STARTS WITH I



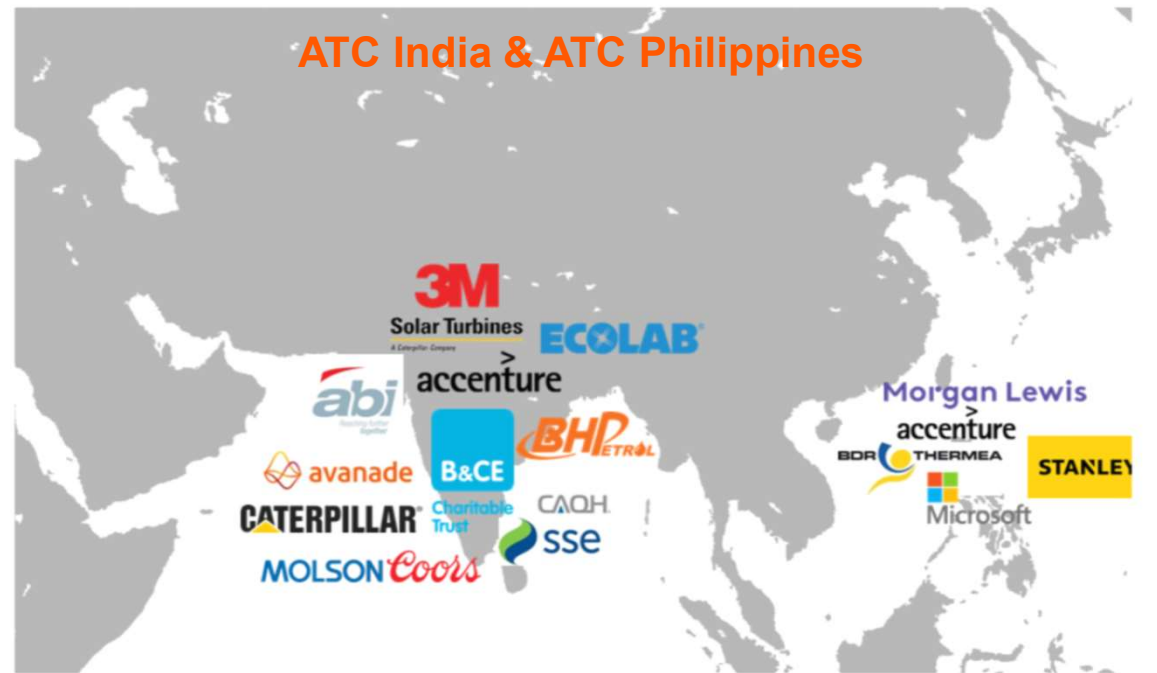
# OUR CLIENTS



## ATC Danubia



## ATC India & ATC Philippines





# OUR TOOLS



Tools and Assets to Drive Efficiency and Innovation

Work Management	Development	Testing & Quality	Source Code Management (using Git)	Continuous Integration	Application Deployment	Application Monitoring, System Monitoring, Alerting	Environment Provisioning	Environment Maintenance	Service Management	Security System	Service Analytics Dashboards
Avanade Modern Engineering Platform											
Team Services	Team Services	Team Services	Team Services	Team Services	Team Services	Application Insights	PowerShell	Microsoft Azure	Power BI	Windows Server 2012	Microsoft Cognitive Services
Visual Studio	Visual Studio	Visual Studio	Visual Studio	Visual Studio	PowerShell						
Team Foundation Server	Team Foundation Server	Team Foundation Server	Team Foundation Server	Team Foundation Server							
Microsoft Teams											
		sonarqube			nuget	AMP			servicenow		
		SeleniumHQ			docker	AppDynamics					
Accenture DevOps Platform (ADOP)											
JIRA	eclipse	sonarqube	git	Jenkins	Jenkins	sensu	CHEF	python	servicenow	Cloudillenix	sensu
		SeleniumHQ			Nexus	splunk	CloudFormation			amazon CloudWatch	kibana
					docker						



# OUR WORK



## **.Net Core 2.0 Web Application DevOps Accelerator**

Used to setup CI and CD pipelines for any .Net Core 2.0 Web Apps, featuring:

- One click deployment, with minimum user input, from any OS platform
- Unit Tests using MS Test, Code Analysis using SonarQube, automated Regression Testing using Selenium
- Blue-Green Deployment Pattern

# OUR GOALS



## **.Net Core 2.0 Web Application DevOps Accelerator**

Demo to showcase full power of Azure DevOps and Azure with a MEP wrapper, providing the experience of both the customer and the business, focused on best-in-class-tools to build open, scalable, and intelligent cross-platform apps with a reliable Azure backend.



# OUR TOOLS



## CONTINUOUS INTEGRATION - CI

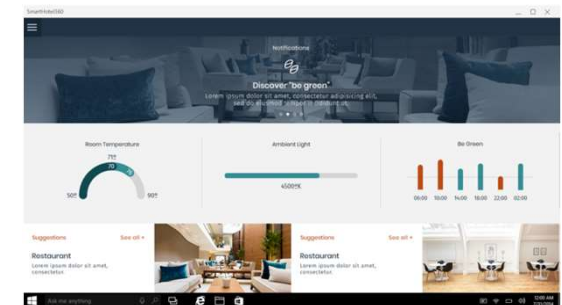
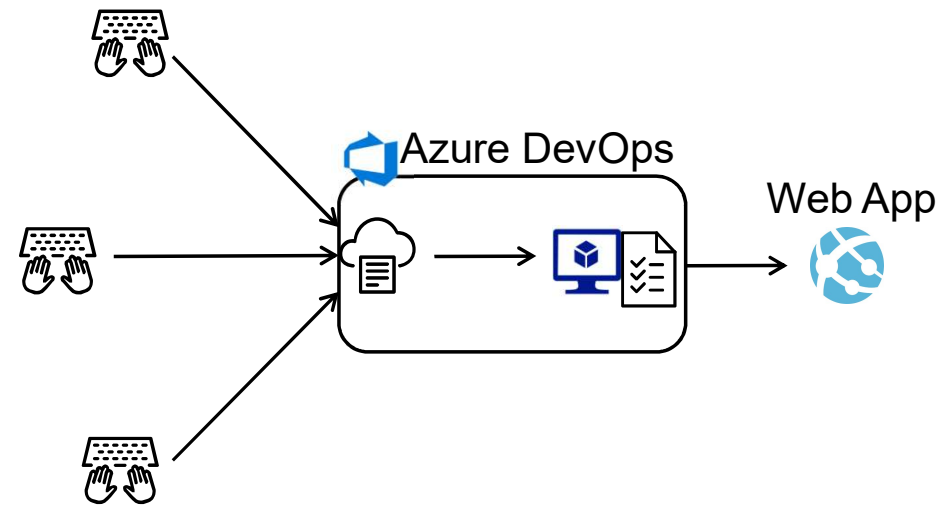
The process of automating the build and testing of code every time a team member commits changes to version control.

## CONTINUOUS DELIVERY - CD

The process of building, testing and deploying from a build to a production environment.

## SMARTHOTEL360

Fictitious smart hospitality company showcasing the future of connected travel



# .NET CORE ACCELERATOR

